

PROVIDENCE, R. I.  
CITY ENGINEER'S OFFICE  
STREET LINE DEPT.

July 5, 1888

013977

Providence R.I.  
This plat accompanies  
our report of this date.

# PLAT OF PLAIN STREET

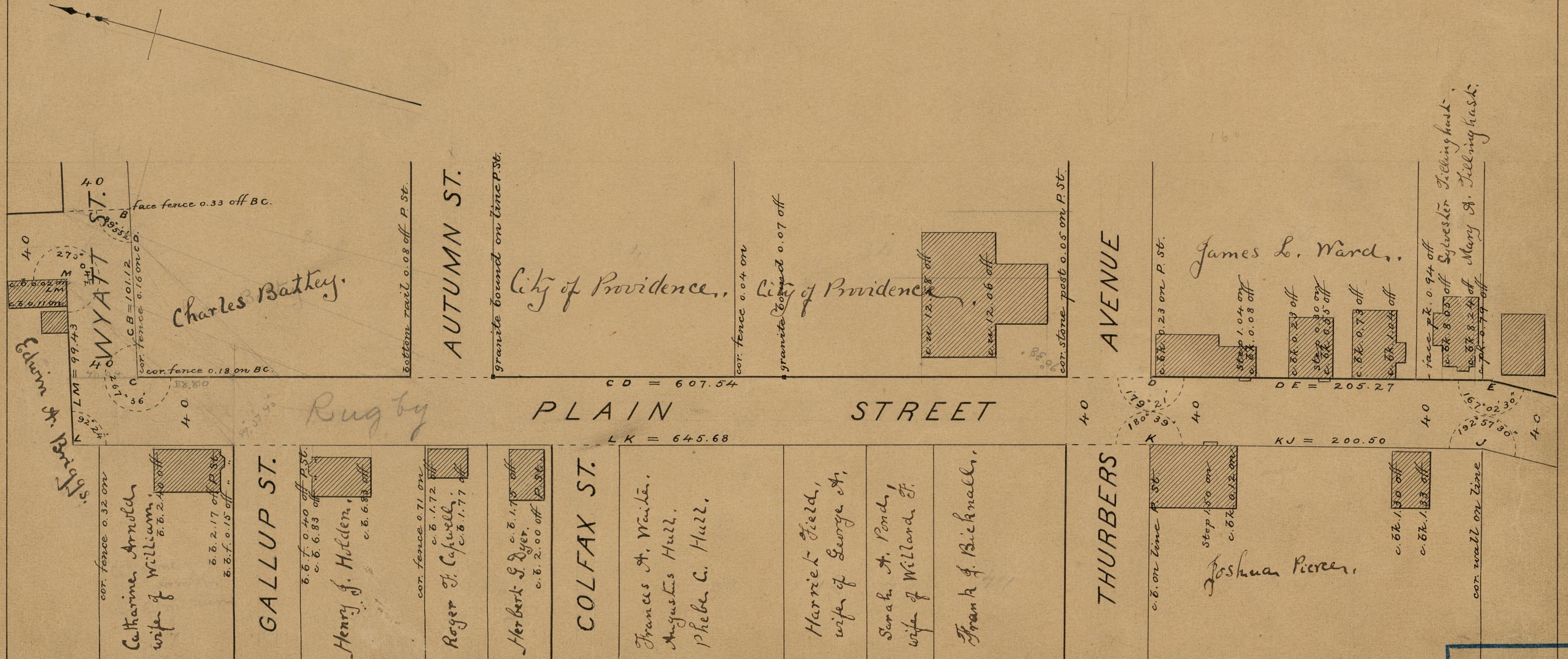
FROM POTTER'S AVE. TO PAVILION AVE.

IN FOUR SHEETS

SCALE 60 FEET PER INCH.

*Changed to Rugby Street  
from Wyatt St. southerly.*

*Mar. 15, 1894.*



OFFICE No.	9661
DRAWER	83
SHEET	A-95